

NAPREDNI FIZIČKI PRAKTIKUM 1
studij Matematika i fizika; smjer nastavnički

SPREGNUTA NJIHALA

ZADACI

1. Izmjerite konstantu opruge koja veže njihala
2. Izmjerite vlastite kružne frekvencije oba njihala. Podesite njihala tako da im frekvencije budu što sličnije.
3. Odredite faktor sprezanja za razne duljine sprezanja, uzimajući u obzir:
 - samo podatke o uređaju (tj. konstante opruge, duljine sprezanja, duljine njihala, ...)
 - mjerenja kružnih frekvencija u slučaju kada je titranje 'u fazi' i kada je 'suprotne faze'
 - mjerenja kružne frekvencije udara
4. Provjerite linearnu ovisnost kvadrata duljine sprezanja o:
 - frekvenciji udara
 - kvadratu frekvencije za slučaj titranja 'suprotne faze'
5. Odredite vlastitu kružnu frekvenciju njihala na osnovu podataka dobivenih iz zadataka 3. i 4., te je usporedite sa izmjerenom vrijednošću.

Napomena: u obradi rezultata se po potrebi može koristiti Fourierova analiza.

Dodatne upute za rad

U originalnim *Phywenim* uputama (na kraju ovog teksta), u opisu eksperimentalnog postava se nalazi i 'pisač' – uređaj koji na papirnatu traku bilježi vremensku ovisnost napona. U *novom* postavu vježbe, umjesto 'pisača' koristi se analogno – digitalni pretvarač, te se naponi bilježe na računalu i spremaju u datoteku na disk. Na taj način se pruža mogućnost sofisticiranije a time i preciznije obrade podataka.

Eksperimentalni postav

Za mjerenje kuta njihala u vremenu koristi se potenciometar koji na izlazu daje napon određen kutom njihala u datom trenutku. Cilj eksperimenta je bilježiti taj napon za oba njihala i analizirati dobivene ovisnosti kuta o vremenu. Tome služi dvokanalni analogno – digitalni konverter (bijela kutija) koji je preko USBa spojen na računalo i upravljani programom u *LabViewu*.

Da bismo mogli vršiti mjerenja, najprije je potrebno spojiti napajanje za potenciometre u kutijama njihala. Za to služi *Phywe* ispravljač. Plave i crvene utičnice spajaju se na odgovarajuće pozitivne odnosno negativne terminale na ispravljaču. Potreban napon je oko 13 V, no nikako više od 15 V! Preveliki naponi mogu uzrokovati oštećenja analogno – digitalnog konvertera. Njihala se s izvorom spajaju paralelno, tako da na oba potenciometra bude isti napon. Izlazni napon koji treba mjeriti pojavljuje se na žutim utičnicama; ulazi A/D konvertera se na njih spajaju, i to na način da se donje žute utičnice spoje na dvije crvene utičnice na kutiji ADCa (ulazi A i B), a gornje žute (djelomično zacrnjene) se spajaju zajedno i potom na crnu utičnicu na kutiji ADCa (GND, tj. uzemljenje). Na taj način dva potenciometra imaju zajedničko uzemljenje, a napone mjerimo dvokanalnim analogno – digitalnim konverterom. On ima veliki unutrašnji otpor i u krugu se ponaša kao običan voltmetar. Izvor uključite tek kad ste provjerili sve spojeve!

Nakon priključivanja i provjere spojeva uključite izvor (sklopka na stražnjoj strani) i pokrenite program predviđen za mjerenje.

LabView program

Do mjernog programa u *LabViewu* na radnoj površini postoji prečac (*shortcut*), njihala. Nakon što kliknete na njega, otvorit će vam se *LabView* radno okruženje, s potrebnim programom. *LabView* je profesionalni programski jezik za grafičko programiranje instrumenata koji se koristi u laboratorijima diljem svijeta. Program za ovo mjerenje je spreman za upotrebu pa ne mijenjajte kôd ni pod kojim uvjetima.

Program izvršava sljedeće zadaće:

- prikuplja podatke s analogno – digitalnog konvertera,

- crta napone na ekran, i po potrebi u datoteku,
- računa Fourierov transformat dobivenih napona u vremenu, za oba kanala.

Na *Front Panelu* programa *njihala.vi* vidjet ćete dva grafa, dugme za mijenjanje broja točaka u sekundi, tipku STOP, izbornik za dužinu ispisa napona na graf, tipku za uključivanje ispisa u datoteku i formu za upisivanje direktorija u kojem se sprema datoteka s izmjerenim naponima.

Da biste pokrenuli program, kliknite strelicu u gornjem lijevom uglu. Na donjem ekranu će početi ispisivanje mjerenih napona u vremenu. Broj točaka u sekundi možete mijenjati dugmetom *Sample Rate*, a broj točaka koje vidite na donjem grafu mijenjate na izborniku *Graph time scale range*. Preporučujemo što veći broj točaka, radi preciznije daljnje obrade. Dok program radi na takav način, NE sprema točke u datoteke niti radi Fourierovu transformaciju, već služi samo za inicijalno promatranje titranja njihala. Jednom kad ste zadovoljni titranjem, možete uključiti spremanje u datoteku klikanjem na *Save output to file*. Podrazumijevani direktorij za spremanje je *D:\Njihala* no možete ga i promijeniti, ali svakako prije početka ispisa. Naponi se spremaju u datoteke s nastavkom *.txt*, a format imena je

- *Broj_mjerenjeA.txt*
- *Broj_mjerenjeB.txt*

za kanal A, odnosno kanal B. Program sam pridjeljuje brojeve izlaznim datotekama, tako da ne možete slučajno prebrisati postojeća mjerenja.

Za pouzdane rezultate Fourierove analize preporučamo da program pustite da mjeri što dulje, odnosno dokle god njihala titraju. Kad titranje prestane (ili procijenite da je dosta), mjerenje isključujete tipkom STOP. Program tada prestaje s radom i na gornjem grafu crta Fourierov transformat onih točaka koje su zapisane u datoteku.

Pokrenete li program ponovno, gornji graf će ostati nepromijenjen do novog zapisivanja točaka, Fourierove transformacije i prestanka rada programa, kada će nacrtati transformat novo snimljenih točaka. Imajte na umu da program sprema u datoteke samo napone u vremenu, a ne i Fourierov transformat (spektar).

Troubleshooting (često postavljena pitanja)

Q. Program se ne želi otvoriti ili javlja grešku, što da radim?

A. Provjerite je li A/D konverter spojen na računalo (bijeli USB kabel). Ako se greška ponavlja, isključite program, odspojite i ponovno spojite A/D konverter i probajte ponovno. Ako se greška još uvijek javlja, ponovno pokrenite računalo. Ako ni to ne pomogne, obratite se asistentu.

Q. Vidim dosta šuma u naponu, što da radim?

A. Određena razina šuma (oko 0.1 V amplitude) je stalno prisutna i normalna jer u vježbi koristimo neoklopljene žice. Taj šum je uglavnom frekvencije gradske mreže i neće vam smetati u daljnjem radu. Ako je šum abnormalno velik (više od 0.2 V) obratite se asistentu.

Q. Stavio/la sam prevelik napon na A/D konverter, koje su posljedice?

A. Jako pazite da vam se to ne dogodi, jer posljedice mogu biti trajne i nepopravljive. NIKAD ne spajajte ulaze A/D konvertera direktno na ispravljač, jer je 15 V dovoljno da pregore ulazna pojačala, što znači neupotrebljivost instrumenta. Normalna razina napona u vježbi bi trebala biti 1 do 2 V (na potenciometrima, odnosno u ispisu programa), i ako naponi prerastu te vrijednosti odmah isključite ispravljač i provjerite sve spojeve.

Q. Mjerenja se na ekranu ispisuju skokovito i kasne za titranjem njihala. Je li to normalno?

A. To je posljedica sporosti ispisa na ekran i nije odraz stvarnog rada programa; naponi koje on skuplja u vremenu za njihalom ne kasne gotovo ništa. Stoga je slika na ekranu točna, iako ispis može biti skokovit.

Q. Čini mi se kao da se srednja vrijednost napona na jednom kanalu polako mijenja u vremenu. Zašto?

A. Takva promjena je moguća ako se objesište njihala polako nagnje jer nije dobro pričvršćeno. Ako ste to primijetili u mjerenju, pozovite asistenta da pričvrsti njihala i počnite ispočetka.

Q. Mjerenje nije isključeno tipkom STOP nego klikanjem na crveni kružić u gornjem lijevom kutu. Što se dogodilo programu?

A. Za prekidanje rada programa UVIJEK koristite tipku STOP, jer inače mogu nastati problemi s komunikacijom između računala i A/D konvertera, te loš zapis u datoteku.

Related topics

Spiral spring, gravity pendulum, spring constant, torsional vibration, torque, beat, angular velocity, angular acceleration, characteristic frequency.

Principle

Two equal gravity pendula with a particular characteristic frequency are coupled by a "soft" spiral spring. The amplitudes of both pendula are recorded as a function of time for various vibrational modes and different coupling factors using a y/t recorder. The coupling factors are determined by different methods.

Equipment

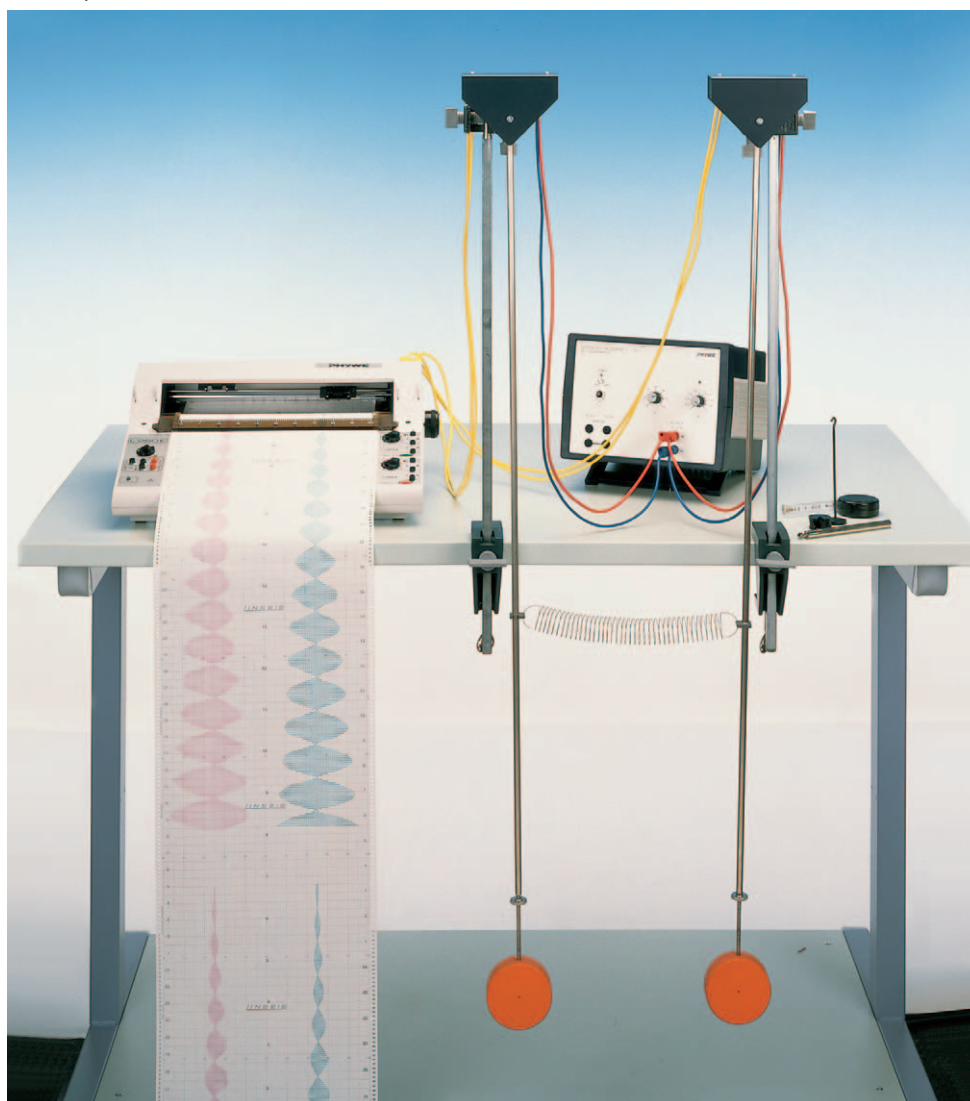
Pendulum w. recorder connection	02816.00	2
Helical spring, 3 N/m	02220.00	1
Rod with hook	02051.00	1
Weight holder f. slotted weights	02204.00	1

Slotted weight, 10 g, black	02205.01	5
Recorder, tY, 2 channel	11415.95	1
Power supply 0-12 V DC/6 V, 12 V AC	13505.93	1
Bench clamp -PASS-	02010.00	2
Support rod -PASS-, square, $l = 630$ mm	02027.55	2
Right angle clamp -PASS-	02040.55	2
Measuring tape, $l = 2$ m	09936.00	1
Connecting cord, $l = 1000$ mm, yellow	07363.02	4
Connecting cord, $l = 1000$ mm, red	07363.01	2
Connecting cord, $l = 1000$ mm, blue	07363.04	2

Tasks

1. To determine the spring constant of the coupling spring.
2. To determine and to adjust the characteristic frequencies of the uncoupled pendula.
3. To determine the coupling factors for various coupling-lengths using
 - a) the apparatus constants
 - b) the angular frequencies for "inphase" and "in opposite phase" vibration
 - c) the angular frequencies of the beat mode.
4. To check the linear relation between the square of the coupling-lengths and
 - a) the particular frequencies of the beat mode
 - b) the square of the frequency for "in opposite phase" vibration.
5. To determine the pendulum's characteristic frequency from the vibrational modes with coupling and to compare this with the characteristic frequency of the uncoupled pendula.

Fig. 1: Experimental set-up for the measurement of the vibrational period of coupled pendula.



Set-up and procedure

Before measurement can begin, the exact value of the spring constant D_F of the coupling spring has to be determined. A supporting rod is fixed to the edge of table by means of a bench clamp. The spring is suspended on the rod from a hook which is attached to the supporting rod via a right angle clamp. Applying Hook's law

$$F = - D_F x$$

the spring constant D_F can be calculated if the extension x of the spring is measured for different slotted weights attached to the spring.

The pendula are then set up without coupling springs as shown in Fig. 1. To record the amplitudes without any time delay one of the pens is pulled out of its holder till the recording of this pen is "on-line" with the recording of the other pen. The "zero"-position of each recording channel is approximately at the center of a paper half. The input sockets of the pendula are now switched in parallel to the DC-output of the power supply unit. The yellow output sockets of the pendula are connected to the recorder. The DC-output voltage of the power supply unit is adjusted to 10 V. For the channels CH 1 and CH 2, a value of 1 V is selected as the measuring range on the recorder. The paper speed should be 1 mm/sec. The zero-adjustments have to be reset on the recorder with the help of the potentiometer of the pendula. Finally the pendula are only deflected to such an extent that the individual amplitudes do not exceed the paper width available.

To set the pendula into vibration the pendula rods are touched with the finger-tips on their upper third and simultaneously moved to and fro till the desired amplitudes have been established. In this way transverse vibrations can be avoided. In view of the subsequent experiments with coupled pendula care should be taken already at this stage to ensure that the pendula are oscillating in the same plane.

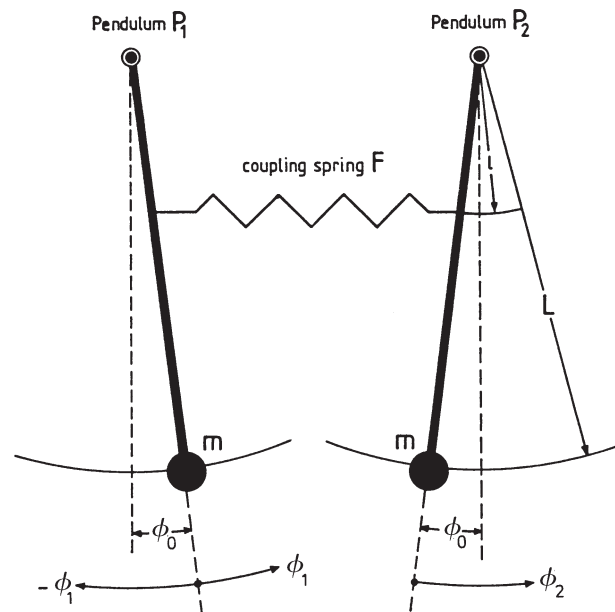
From the plotted curves the period T_0 is determined several times for each pendulum. The mean values of the periods, \bar{T}_0 , of both pendula have to be identical within the limits of error. If deviations are observed, the lengths of the pendulum rods have to be adjusted. This is done by detaching the counter nut on the threaded rod of the pendulum weight, adjusting the pendulum length and manually retightening the counter nut.

For the performance of the experiments with coupled pendula, the coupling spring is fixed to the plastic sleeves on the pendulum rods at a point equidistant from the pendulum's fulcrum. Furthermore the "zero"-positions have to be readjusted. It has to be insured that there is no electric conductivity between the pendula.

The amplitudes as a function of time are to be recorded for different coupling lengths l using the following initial conditions:

- A. Both pendula are deflected with the same amplitude to the same side and simultaneously released. ("in-phase" vibration)
- B. Both pendula are deflected with the same amplitude but in opposite directions and simultaneously released. ("in opposite phase" vibration)
- C. One pendulum remains at rest. The second pendulum is deflected and released (beat mode). Here satisfactory results can only be achieved if during the preparation both pendula have been properly adjusted in such a way that they have in fact the same period \bar{T}_0 .

Fig. 2: Diagram of coupled pendula at rest.



In all three cases the vibrations have to be recorded for at least three or four minutes. From the plotted curves the mean values for the corresponding vibrational periods can be determined.

Theory and evaluation

If two gravity pendula P_1 and P_2 with the same angular characteristic frequency ω_0 are coupled by a spring, for the position of rest and small angle deviation \sim due to the presence of gravity and spring-tension we have the following torques (Fig. 2):

torque due to gravity:

$$M_{s,0} = m g L \sin \phi_0 \sim m g L \phi_0 \tag{1}$$

torque due to spring-tension:

$$M_{F,0} = - D_F x_0 l \cos \phi_0 \sim - D_F x_0 l$$

D_F = spring constant

x_0 = extension of the spring

l = coupling length

m = pendulum mass

L = pendulum length

g = acceleration due to gravity

ϕ_0 = angle between the vertical and the position of rest

If P_1 is now deflected by ϕ_1 and P_2 by ϕ_2 (see Fig. 2) and subsequently released, we have because of

$$I \ddot{\phi} = M$$

I = moment of inertia of a pendulum around its fulcrum

$$I \ddot{\phi}_1 = M_1 = -mgL\phi_1 + D_F l^2 (\phi_2 - \phi_1) \quad (2)$$

$$I \ddot{\phi}_2 = M_2 = -mgL\phi_2 + D_F l^2 (\phi_2 - \phi_1)$$

Introducing the abbreviations

$$\omega_0^2 = \frac{mgL}{I} \quad \text{and} \quad \Omega^2 = \frac{D_F l^2}{I} \quad (3)$$

we obtain from Eqs. (2)

$$\ddot{\phi}_1 + \omega_0^2 \phi_1 = -\Omega^2 (\phi_2 - \phi_1) \quad (4)$$

$$\ddot{\phi}_2 + \omega_0^2 \phi_2 = +\Omega^2 (\phi_2 - \phi_1)$$

At $t = 0$ the following three initial conditions are to be realized successively.

A: "inphase" vibration

$$\phi_1 = \phi_2 = \phi_A; \quad \phi_1 - \phi_2 = 0$$

B: "in opposite phase" vibration

$$-\phi_1 = \phi_2 = \phi_A; \quad \phi_1 - \phi_2 = 2\phi_A \quad (5)$$

C: beat mode

$$\phi_1 = \phi_A; \quad \phi_2 = 0; \quad \phi_1 - \phi_2 = \phi_A$$

The general solutions of the system of differential equations (4) with the initial conditions (5) are:

$$\text{A:} \quad \phi_1(t) = \phi_2(t) = \phi_A \cos \omega_0 t \quad (6a)$$

$$\text{B:} \quad \phi_1(t) = \phi_A \cos \left(\sqrt{\omega_0^2 + 2\Omega^2} t \right) \quad (6b)$$

$$\phi_2(t) = -\phi_A \cos \left(\sqrt{\omega_0^2 + 2\Omega^2} t \right)$$

$$\text{C:} \quad \phi_1(t) = \phi_A \cos \left(\frac{\sqrt{\omega_0^2 + 2\Omega^2} - \omega_0}{2} \cdot t \right) \quad (6c)$$

$$\cdot \cos \left(\frac{\sqrt{\omega_0^2 + 2\Omega^2} + \omega_0}{2} \cdot t \right)$$

$$\phi_2(t) = -\phi_A \sin \left(\frac{\sqrt{\omega_0^2 + 2\Omega^2} - \omega_0}{2} \cdot t \right)$$

$$\cdot \sin \left(\frac{\sqrt{\omega_0^2 + 2\Omega^2} + \omega_0}{2} \cdot t \right)$$

Comment

A: "inphase" vibration

Both pendula vibrate inphase with the same amplitude and with the same frequency ω_0 . The latter is identical with the angular characteristic frequency ω_0 of the uncoupled pendula.

$$\omega_g = \omega_0 \quad (7a)$$

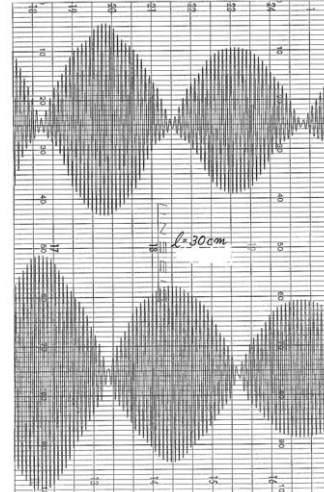
B: "in opposite phase" vibration

Both pendula vibrate with the same amplitude and with the same frequency ω_c but there is a phase-difference of π . In

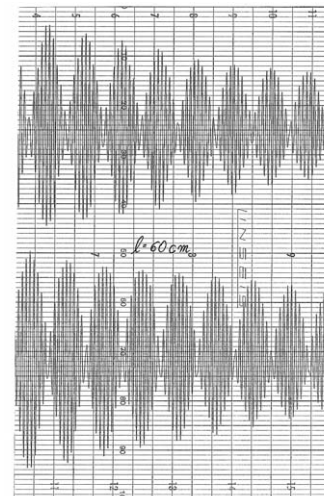
accordance with (3), the angular frequency

$$\omega_c = \sqrt{\omega_0^2 + 2\Omega^2} \quad (7b)$$

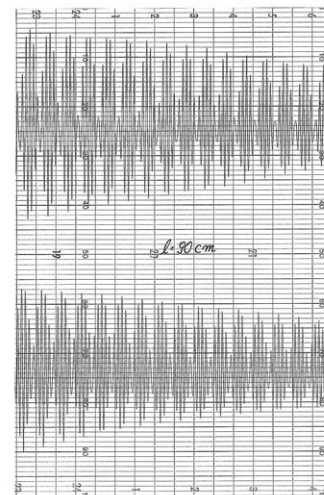
depends on the coupling length l .



$l = 30 \text{ cm}$



$l = 60 \text{ cm}$



$l = 90 \text{ cm}$

Fig. 3: Amplitude curves of the vibrations of coupled pendula in the beat mode for three different coupling lengths l as a function of time. Speed of recorder: $t = 10 \text{ s/Div}$.

l/cm	$T_g = T_0/\text{s}$	T_c/s	$\frac{2\pi}{T_c} = \omega_c/\text{s}^{-1}$	T_1/s	$\frac{\pi}{T_1} = \omega_1/\text{s}^{-1}$	T_2/s	$\frac{2\pi}{T_2} = \omega_2/\text{s}^{-1}$
30	2.024	1.978	3.177	80.75	0.039	2.000	3.142
40	2.019	1.934	3.249	45.74	0.069	1.977	3.178
50	2.028	1.897	3.312	29.79	0.106	1.969	3.191
60	2.027	1.841	3.413	20.76	0.151	1.944	3.232
70	2.028	1.800	3.491	15.59	0.202	1.925	3.264
80	2.023	1.736	3.619	12.29	0.256	1.889	3.326
90	2.021	1.679	3.742	9.85	0.319	1.867	3.365

Tab. 1

l/cm	$K_1 = \frac{D_F l^2}{mgL \pm D_F l^2}$	$K_2 = \frac{\omega_c^2 - \omega_0^2}{\omega_c^2 + \omega_0^2}$	$K_3 = \frac{2\omega_1\omega_2}{\omega_1^2 + \omega_2^2}$	$\frac{(K_1 - K_2) 100}{K_1}$	$\frac{(K_1 - K_3) 100}{K_1}$
30	0.0249	0.0245	0.0249	2.5	0
40	0.0435	0.0423	0.0432	2.8	0.7
50	0.0664	0.0636	0.0661	4.2	0.5
60	0.0928	0.0888	0.0934	4.3	0.7
70	0.1223	0.1150	0.1230	6.0	0.6
80	0.1539	0.1415	0.1546	8.1	0.5
90	0.1872	0.1705	0.1878	8.9	0.3

Tab. 2

C: Beat mode

For weak coupling, e.g. $v_0 \gg \Omega$, the angular frequency of the first factor can be expressed as follows:

$$\omega_1 = \frac{\sqrt{\omega_0^2 + 2\Omega^2} - \omega_0}{2} \approx \frac{\Omega^2}{2\omega_0} \quad (8a)$$

For the angular frequency of the second factor we get:

$$\omega_2 = \frac{\sqrt{\omega_0^2 + 2\Omega^2} + \omega_0}{2} \approx \omega_0 + \frac{\Omega^2}{2\omega_0} \quad (8b)$$

Subsequently we get:

$$\omega_1 < \omega_2$$

Fig. 3 shows the amplitudes $\phi_1(t)$ and $\phi_2(t)$ of both pendula as a function of time for the beat case and for different coupling lengths l . As coupling factor we define the ratio

$$K = \frac{D_F l^2}{mgL + D_F l^2} \quad (9)$$

From Eq. (3) and Eq. (9) we get

$$K = \frac{\Omega^2}{\omega_0^2 + \Omega^2} \quad (10)$$

The coupling factor K of Eq. (10) can be calculated from the frequencies of the individual vibrational modes.

Substituting Eq. (7a) and Eq. (7b) into Eq. (10) results in

$$K = \frac{\omega_c^2 - \omega_0^2}{\omega_c^2 + \omega_0^2} \quad (11)$$

(“in opposite phase” vibration)

Substituting Eq. (8a) and Eq. (8b) into Eq. (10) yields:

$$K = \frac{2\omega_1\omega_2}{\omega_1^2 + \omega_2^2} \quad (12)$$

(beat mode)

To check the influence of coupling length on the frequencies of the individual vibrational modes, we substitute Eq. (11) and Eq. (12) into Eq. (9). Then we get for the in opposite phase vibration:

$$\omega_1^2 = \frac{2D_F\omega_0^2}{mgL} l^2 + \omega_0^2 \quad (13)$$

And for the beat case:

$$\omega_1 = \omega_0 \frac{D_F}{2mgL} l^2 \quad (14)$$

as well as

$$\omega_2 = \omega_0 \frac{D_F}{2mgL} l^2 + \omega_0 \quad (15)$$

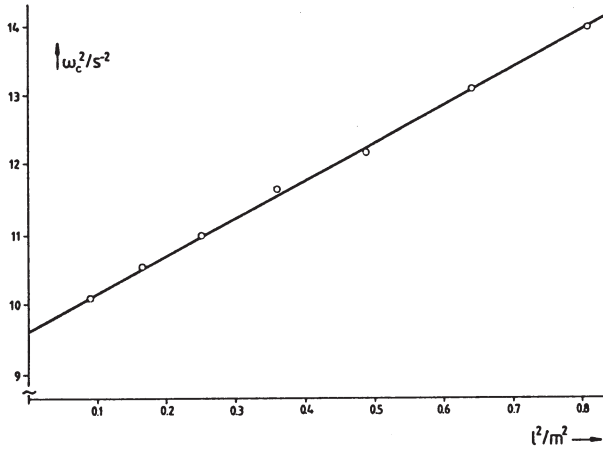
The measurement of the “inphase” vibration of the uncoupled pendula results in the following:

$$\bar{T}_0 = (2.026 \pm 0.003) \text{ s}; \quad \frac{\Delta\bar{T}_0}{\bar{T}_0} \sim \pm 0.15 \% \quad (16)$$

or $\frac{2\pi}{\bar{T}_0} = \bar{\omega}_0 = (3.101 \pm 0.005) \text{ s}^{-1}$

Tab. 1 shows the mean values of the vibrational periods for different coupling lengths l as well as the corresponding angular frequencies.

Fig. 4: Frequency of the opposite phase vibration ω_c^2 as a function of the coupling length l^2 .



From the measured values of the “inphase” vibration (column 2) we get

$$\bar{T}_g \triangleq (2.024 \pm 0.004) \text{ s}; \quad \frac{\Delta \bar{T}_0}{\bar{T}_0} \sim \pm 0.2 \%$$

or
$$\frac{2\pi}{\bar{T}_0} = \bar{\omega}_0 = (3.104 \pm 0.006) \text{ s}^{-1}$$

Column 2 of Tab. 2 contains the coupling factors calculated according to Eq. (9) based on the apparatus constants as a function of the coupling length l .

We used:

$$D_F = 2.9 \text{ N/m (measured value)}$$

$$L = L_1 = L_2 = 104 \text{ cm}$$

(distance fulcrum center of pendulum weight)

$$m = 1 \text{ kg}$$

(mass of pendulum rod is not included)

$$g = 9.81 \text{ m/s}$$

Columns 3 and 4 contain the coupling factors calculated from the measured angular frequencies for the “in opposite phase” vibration (Eq. 11) and the beat case (Eq. 12). Columns 5 and 6 show the corresponding percentage deviations.

In Fig. 4 the measured values ω_c^2 of Tab. 1 have been plotted versus l^2 . From the regressive line

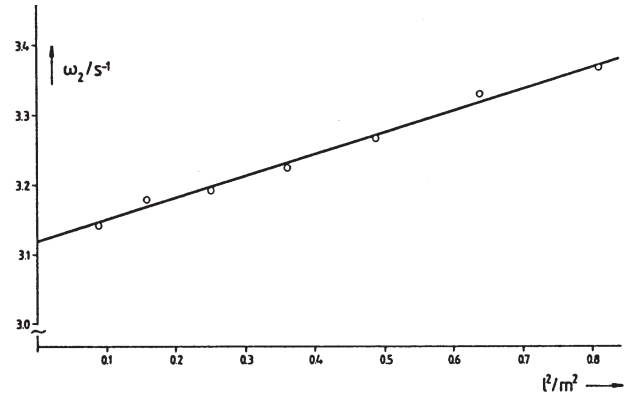
$$y = A + Bx$$

we obtain

$$A = (9.64 \pm 0.58) \text{ s}^{-2}; \quad \frac{\Delta A}{A} = \pm 6 \%$$

$$B = (5.369 \pm 0.005) \text{ s}^{-2} \text{ m}^{-2}; \quad \frac{\Delta B}{B} = \pm 0.1 \%$$

Fig. 5: Frequency ω_2 (beat mode) as a function of the coupling length l^2 .



Comparison with Eq. (13) gives

$$\sqrt{A} = \omega_0 = (3.105 \pm 0.093) \text{ s}^{-1}; \quad \frac{\Delta \omega_0}{\omega_0} = \pm 3 \%$$

In Fig. 5 the measured values ω_0 of Tab. 1 have been plotted versus l^2 . The regression line

$$y = A + Bx$$

should confirm Eq. (15). We obtain:

$$A = \omega_0 = (3.12 \pm 0.16) \text{ s}^{-1}; \quad \frac{\Delta \omega_0}{\omega_0} = \pm 5 \%$$

$$B = (0.309 \pm 0.012) \text{ s}^{-1} \text{ m}^{-2}; \quad \frac{\Delta B}{B} = \pm 4 \%$$

In Fig. 6 the measured values ω_1 of Tab. 1 are plotted as a function of l^2 . The straight line through the origin confirms Eq. (14).

The results obtained for ω_0 using three different vibrational modes for the coupled pendula are in good agreement with the angular characteristic frequency of the uncoupled pendula.

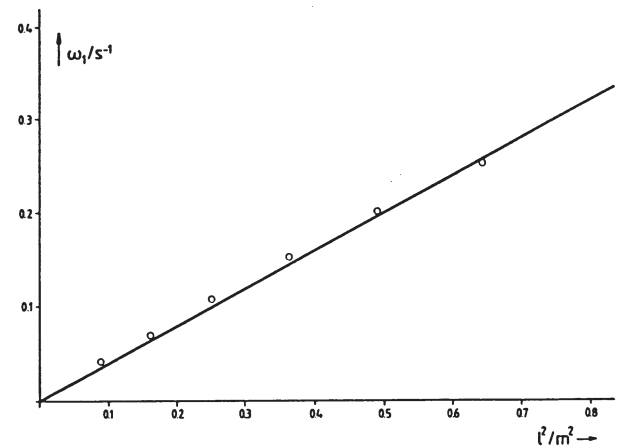


Fig. 6: Frequency ω_1 (beat mode) as a function of the coupling length l^2 .

LEP
1.3.25
-01

Coupled Pendula

